

记录您的型号：
Record your model number: _____

警告：人身伤害或产品损坏风险。如果处理不慎，产品可能会破裂、碎裂或造成人身伤害。寻求帮助来提起产品。

重要信息! 向台面制造商提供您的台盆型号。使用台盆随附的开孔模板，或联系客户服务部并提供您的型号以获取最新的开孔模板。

请勿使用粘合剂或粘性密封剂来安装产品。

您的产品可能与所示图片效果有所不同，安装步骤相同。具体可查阅对应型号尺寸图。

请遵守当地管路安装及建筑条例。

在安装或使用本产品之前阅读所有说明。

请保存说明书。

所需工具和材料：

1A. 钻孔机和 14 mm 钻头

1B. 100% 密封硅胶

安装步骤：

2A. 检查台盆与水龙头的间隙。

2B. 检查台盆与柜子间隙。

2C. 检查排水管与柜子的间隙。

4A. 将模板放置在台面上，并与成品墙标记对齐。检查台盆缘与成品墙之间的间隙是否符合规定。描出切口，去掉模板。

5A. 在所绘线的内侧钻定位孔。

5B. 沿所绘线的内边缘对台面进行切割。

6A. 使用软布对开口进行清洁。

7A. 将台盆（科勒标志正面朝向用户）置于切口中，根据需要调整切口以适应台盆。

8A. 用铅笔沿台盆外侧画一条线。

9A. 拆下台盆，根据模板上的标记检查台盆的方向。

10A. 移除排水盖和垫片，安装随附的陶瓷盖和垫圈。安装排水管。

此台盆随附的陶瓷盖只适用于科勒下水器 **1142103-****和 **1095926-****，若使用其他下水器则不能使用随附的陶瓷盖。

11A. 按照制造商的说明，安装水龙头。

12A. 在铅笔线和切口之间的台面上涂抹 100% 密封硅胶。

12B. 用油灰刀均匀涂抹 100% 密封硅胶。

13A. 小心地将水槽放入切口中，然后用力向下按压。

14A. 立即擦掉多余的 100%密封硅胶。按照制造商的说明，使 100% 密封硅胶固化。

15A. 完成排水管组件和水龙头供水管线的安装。

16A. 放水并检查有无漏水。

需要帮助？ 请联系我们的客户服务中心。

• 中国大陆：+(86) 800-820-2628, +(86) 400-820-2628

• **保养和清洁：** kohler.com.cn/support/care-and-cleaning/

本产品在**科勒®卫浴产品的 3 年有效质保范围内**，详见所附的《合格证》。

WARNING: Risk of personal injury or product damage. Product can break, chip, or cause injury if handled carelessly. Get help lifting the product.

IMPORTANT! Provide your countertop manufacturer with your bathroom sink model number. Use the cut-out template provided with your bathroom sink or contact Customer Service with your model number for the latest cut-out template.

DO NOT use adhesives or adhesive sealants to install the product.

The product shown may differ from your actual product. The installation steps still apply. Refer to the Roughing-In sheet for dimensional information.

Follow all local plumbing and building codes.

READ ALL INSTRUCTIONS BEFORE INSTALLATION

SAVE THESE INSTRUCTIONS

Required Tools and Materials:

1A. Drill and 14 mm Bit

1B. 100% Silicone Sealant

Installation Steps:

2A. Verify bathroom sink and faucet clearance.

2B. Verify bathroom sink and cabinet clearance.

2C. Verify drain and cabinet clearance.

4A. Position the template on the countertop and align with the finished wall markings. Verify that the clearance is as specified between the outer rim of the bathroom sink and the finished wall. Trace the cut-out. Remove the template.

5A. Drill a pilot hole on the inside of the traced line.

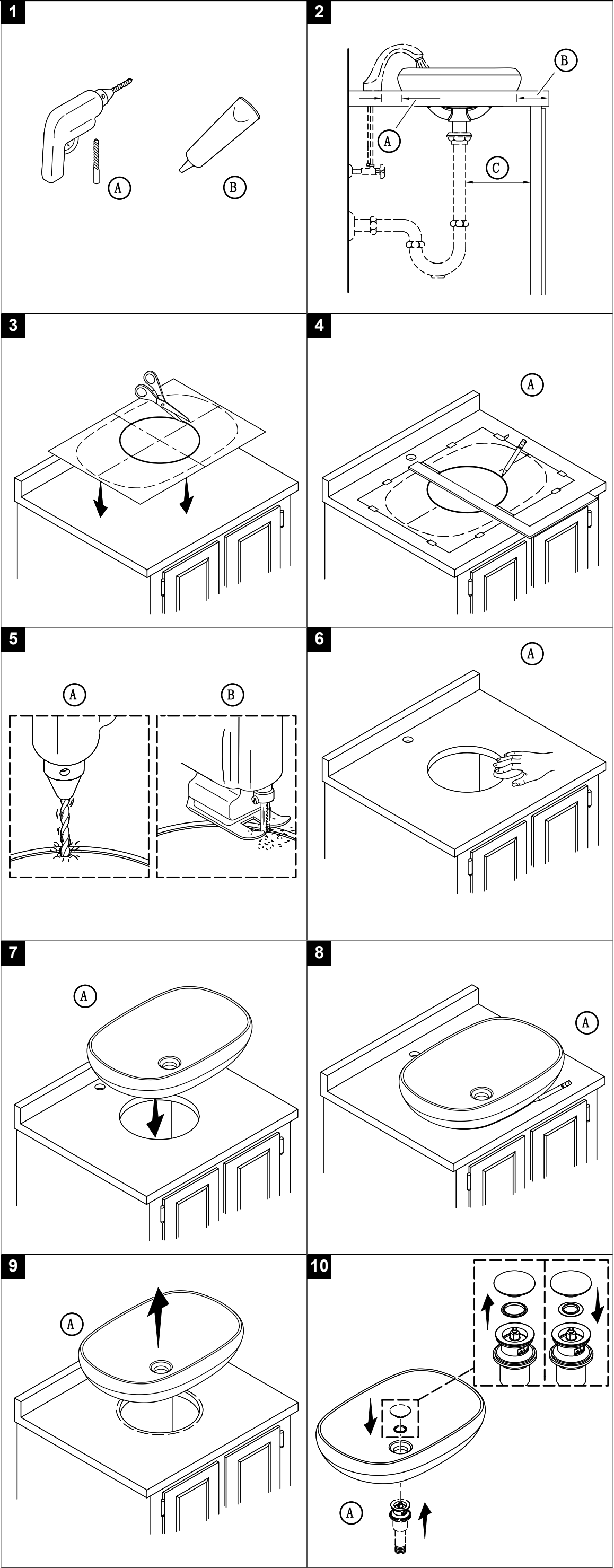
5B. Cut the countertop along the inside edge of the traced line.

6A. Clean the opening with a soft cloth.

7A. Position the bathroom sink in the cutout. Adjust the cutout to accommodate the bathroom sink as needed.

8A. Trace a pencil line around the outside of the bathroom sink.

9A. Remove the bathroom sink. Verify the orientation of the bathroom sink with the markings given on the template.



10A. Remove the drain cover and washer. Install the provided ceramic cover and the washer. Install the drain.

The provided ceramic cover is only applicable to the drain 1142103-** and 1095926-**, the cover cannot be used if any other drain is chosen.

11A. Install the faucet following the manufacturer's instructions.

12A. Apply the 100% silicone sealant to the countertop between the pencil line and cutout opening.

12B. Spread the 100% silicone sealant evenly with a putty knife.

13A. Carefully position the bathroom sink in the cutout and press down firmly.

14A. Immediately wipe away excess 100% silicone sealant. Allow the 100% silicone sealant to cure according to the manufacturer's instructions.

15A. Finish installing the drain assembly and faucet supply lines.

16A. Run water and check for leaks.

Need help? Please contact our Customer Care Center.

• Mainland China: +(86) 800-820-2628, +(86) 400-820-2628

• Care and cleaning: kohler.com.cn/support/care-and-cleaning/

This product is covered under the **Three-Year Limited Warranty for KOHLER® Plumbing Products**, found in the packed Compliance Certification.

